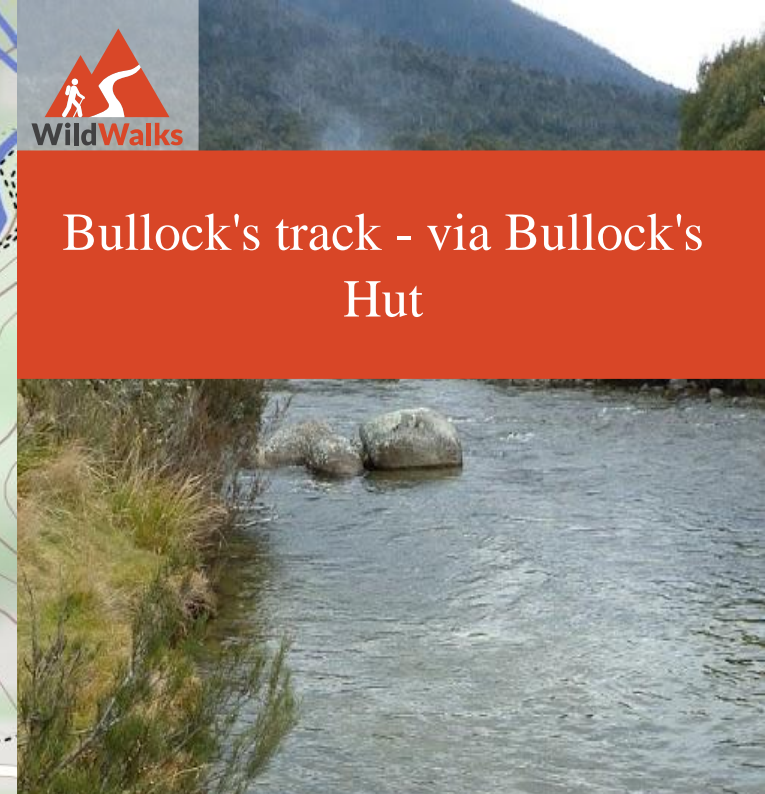
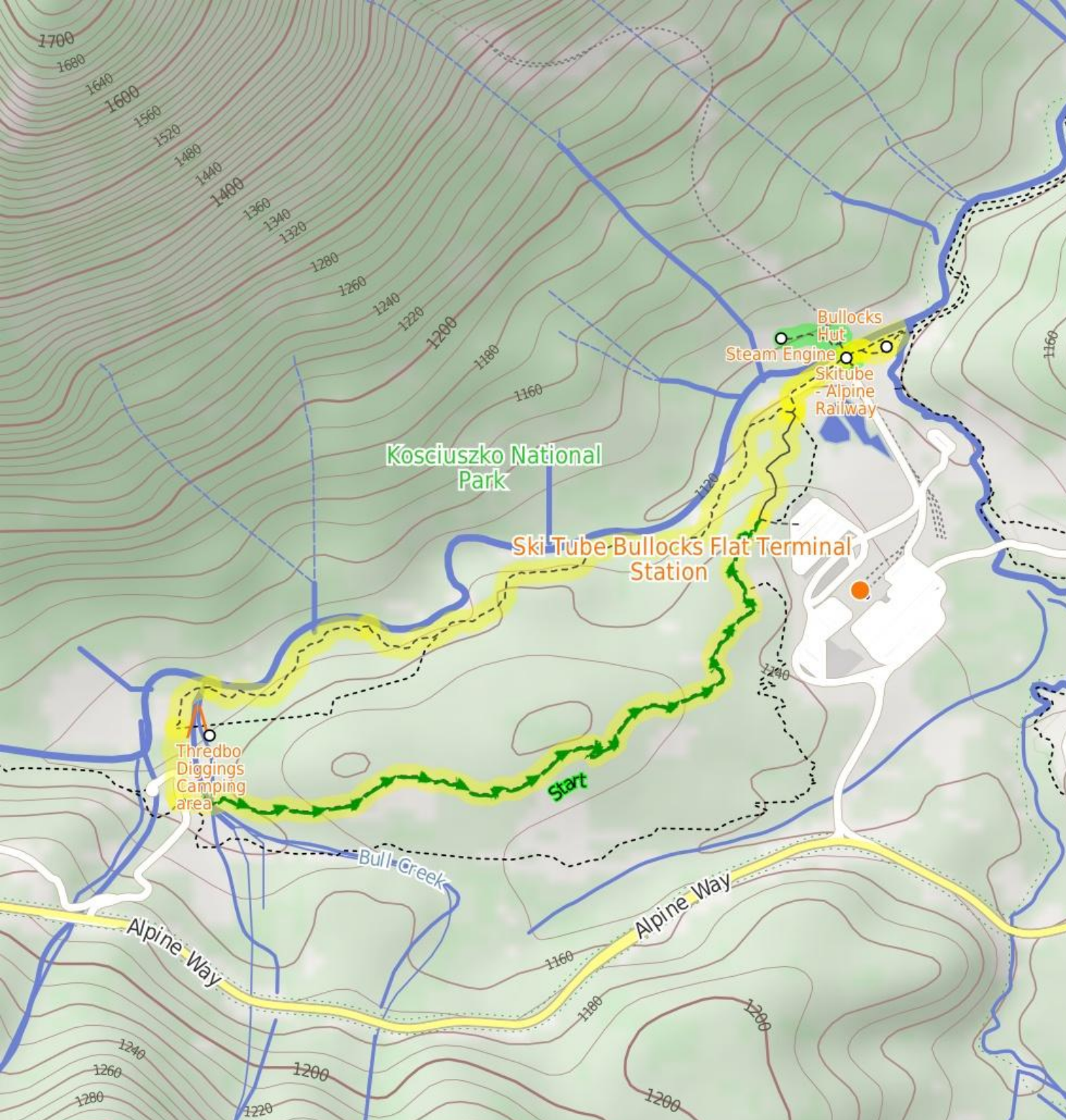


## Bullock's track - via Bullock's Hut



2 hrs

5.2 km Circuit

Moderate track

▲ 110m

3

This walk explores some of the history and beauty along the Thredbo River around Bullocks Flat. Starting from the Thredbo Diggings campsite, you will follow the clearly signposted Bullocks Track though the scattering of snow gums and granite boulders to Bullocks Hut, before returning to the campsite via a track that follows the Thredbo River. The walk ducks under the Ski Tube railway bridge, and uses the bridge to cross the river on an optional side trip.

1116m

1159m

Kosciuszko National Park

## Covered in snow part of the year

This walk leads through an extreme alpine environment and all walkers must be well prepared. During summer, be prepared for both very hot and cold weather, high winds, rain, snow, extreme UV levels and some sections of snow or ice on the ground. Before starting this walk, check advice with [Snowy Region Visitor Information Centre](#) (02) 6450 5600, the [weather forecast](#) and the [snow conditions](#) then change your plans as needed. These notes, grades and walking times have been written for use in the summer months only. Between May and the end of October, this walk is likely to be covered in snow/ice, visitors should be carrying and be prepared to use snowshoes or cross country skis. When there is a chance of significant snow on the ground, visitors will need particularly strong navigation and snowcraft skills - tracks and signage may not be visible. For most visitors, it is best to consider this walk closed during the colder months.

## Thredbo Diggings Camping area

This is a pleasant free campsite in the Thredbo River valley beside the river. It is a popular spot for fishing and exploring the area. The Diggings Bullocks Track is also accessible from here. The campsites are not marked out but there are non-flushing toilets, picnic tables and metal fire BBQ's. No drinking water is provided, treat water from Thredbo River before use. The campsite signpost is about 1.9km west of the SkiTube along Alpine Way.

## Skitube - Alpine Railway

The Skitube is an electric rack railway which provides access between Bullocks Flat, Perisher and Blue Cow ski fields. The journey starts across the bridge over Thredbo River, then covers a distance of 8.5km, of which 6.3km is underground in the Bilston and Blue Cow tunnels. Construction of the railway began in 1984, and the complete line was officially opened in 1988. There are 11 passenger cars in total, of which 4 are motor cars - each with four 301 kW traction motors, making them the most powerful rack railway vehicles in the world. The braking system is mixed regenerative and rheostatic. Prices are around \$48 for an adult return fare. Schedules vary throughout the year. [More info.](#)

## Before You walk

Bushwalking is fun and a wonderful way to enjoy our natural places. Sometimes things go bad, with a bit of planning you can increase your chance of having an enjoyable and safer walk. Before setting off on your walk check

- 1) Weather Forecast ([BOM Snowy Mountains District](#))
- 2) Fire Dangers ([Monaro Alpine](#))
- 3) Park Alerts ([Kosciuszko National Park](#))
- 4) Research the walk to check your party has the skills, fitness and equipment required
- 5) Agree to stay as a group and not leave anyone to walk solo

## Think before you TREK

The 'Think before you TREK' program developed by NSW Police & NPWS promotes the benefits of planning ahead for your bushwalking trip by using an easy to remember acronym:

- T** Take adequate supplies of food, water, navigation and first aid equipment.
- R** Register your planned route and tell friends and family when you expect to return.
- E** Emergency beacon (PLB's) should be carried on walks with significant gaps in mobile coverage (check terrain profile).
- K** Keep to your planned route and follow the map and walking trails.

## Topo Maps


The maps provided on wildwalks are helpful, but there are times where you may need maps covering a broader area. Maps that cover this walk include;

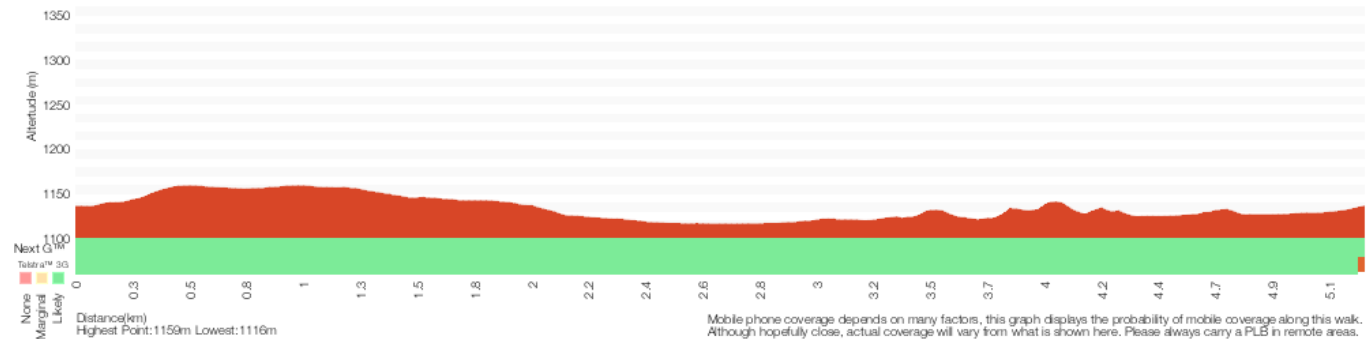
**1:25 000 Map Series:**85252S PERISHER VALLEY, 85241N CHIMNEYS RIDGE

**1:100 000 Map Series:**8525 KOSCIUSZKO, 8524 JACOBS RIVER

## Grade

This walk has been graded using the AS 2156.1-2001. The overall grade of the walk is determined by the highest classification along the whole track.

Grade 3/6 Moderate track	
	
<b>Length</b>	5.2 km Circuit
<b>Time</b>	2 hrs
<b>Quality of track</b>	Formed track, with some branches and other obstacles (3/6)
<b>Signs</b>	Clearly signposted (1/6)
<b>Experience Required</b>	No experience required (1/6)
<b>Weather</b>	Storms may impact on navigation and safety (3/6)
<b>Infrastructure</b>	Generally useful facilities (such as fenced cliffs and seats) (1/6)



Mobile phone coverage depends on many factors, this graph displays the probability of mobile coverage along this walk. Although hopefully close, actual coverage will vary from what is shown here. Please always carry a PLB in remote areas.

### Are you ready to have fun?

Please ensure you and your group are well prepared and equipped for all possible hazards and delays. Check park closures, weather information and Fire Danger Rating before setting out. Optional side trips and alternate routes noted are not included in this walk's overall grade, length or time estimate. Please allow extra time for resting and exploring areas of interest. The authors, staff and owners of wildwalks take care in preparing this information but will not accept responsibility for any inconvenience, loss or injury you may experience. Please take care, have fun - Happy Walking.

**Getting there** Traveling by car is the only practical way to get to Thredbo Diggings Bullocks trackhead (gps: -36.4478, 148.4254). Car: A park entry fee is required for driving into the park.

This is a circuit, so you will finish back at the start.

Find up to date and more information including; travel directions, weather, park closures and walker feedback at <http://wild.tl/bc>

### 0 | Covered in snow part of the year

This walk leads through an extreme alpine environment and all walkers must be well prepared. During summer, be prepared for both very hot and cold weather, high winds, rain, snow, extreme UV levels and some sections of snow or ice on the ground. Before starting this walk, check advice with [Snowy Region Visitor Information Centre](#) (02) 6450 5600, the [weather forecast](#) and the [snow conditions](#) then change your plans as needed. These notes, grades and walking times have been written for use in the summer months only. Between May and the end of October, this walk is likely to be covered in snow/ice, visitors should be carrying and be prepared to use snowshoes or cross country skis. When there is a chance of significant snow on the ground, visitors will need particularly strong navigation and snowcraft skills - tracks and signage may not be visible. For most visitors, it is best to consider this walk closed during the colder months.

### 0 | Thredbo Diggings Camping area

This is a pleasant free campsite in the Thredbo River valley beside the river. It is a popular spot for fishing and exploring the area. The Diggings Bullocks Track is also accessible from here. The campsites are not marked out but there are non-flushing toilets, picnic tables and metal fire BBQ's. No drinking water is provided, treat water from Thredbo River before use. The campsite signpost is about 1.9km west of the SkiTube along Alpine Way.

### 0 | Thredbo Diggings Bullocks trackhead

(2 km 34 mins) From the Bullocks Trackhead (just south of Thredbo Diggings, about 430m from the Alpine Way), this walk follows the metal 'Bullocks Track' sign down the steps (or ramp) and along the gravel path to cross an open grassy flat. These open grassy areas are frost hollows and part of Muzzlewood Flats. The gravel soon gives way to a rock, then metal, path that leads over a metal arched bridge. The path then leads uphill and after about 300m, the walk follows the grassy track along the edge of a clearing, then follows another section of winding path. The path is then broken again with a section of grassy track before coming to gravel path again. This path leads downhill and soon bends sharply to the right, before passing through an even sharper left-hand bend. The path gives way to a grassy track a few more times and the walk winds gently down through the open bushland, passing a few granite boulders. The path then leads over a small rise, winding through some larger granite boulders, where the track leads down the hill to a three-way intersection and a 'Thredbo Diggings 2km' sign pointing back up the track. This section of the walk follows a track shared with walkers and mountain bike riders.

### 1.97 | Int of Bullocks Walking and car park tracks

(340 m 6 mins) Continue straight: From the intersection, this walk follows the 'Bullocks Hut 600m' sign gently downhill along the gravel path. The trail

winds through the bush and soon passes between some large granite boulders, then after about 270m, the walk heads left at a 'T' intersection with a management trail, and comes to an intersection just before signpost and timber bridge.

### 2.31 | Bullocks Loop bridge intersection

(220 m 4 mins) Turn right: From the intersection, this walk follows the 'Bullocks Hut 300m' sign across the bridge. The grassy track bends left and heads over a small rise, before bending right and following the wide gravel track (past the water monitoring station). Soon the walk veers left to follow the 'Bullocks Hut' sign along the paved footpath and under the rail bridge. Just on the other side of the bridge, this walk comes to a signposted three-way intersection.

### 2.53 | Skitube - Alpine Railway

The Skitube is an electric rack railway which provides access between Bullocks Flat, Perisher and Blue Cow ski fields. The journey starts across the bridge over Thredbo River, then covers a distance of 8.5km, of which 6.3km is underground in the Bilston and Blue Cow tunnels. Construction of the railway began in 1984, and the complete line was officially opened in 1988. There are 11 passenger cars in total, of which 4 are motor cars - each with four 301 kW traction motors, making them the most powerful rack railway vehicles in the world. The braking system is mixed regenerative and rheostatic. Prices are around \$48 for an adult return fare. Schedules vary throughout the year. [More info.](#)

### 2.53 | Optional sidetrip to Steam Engine

(310 m 6 mins) Turn right: From the intersection, this walk heads uphill, away from the river and face of the 'River Walk' sign, keeping the rail bridge to your right. The walk heads up the hill and bends sharply right, finding the 'Pedestrian Access...' sign. Here, the walk follows the footpath along the bridge and over Thredbo River. On the other side of the bridge, the walk follows the posts and the 'River Walk' sign right and under the bridge. Just past the bridge, this walk follows the grassy track up to the right, passing around the edge of a small dam. Soon after the dam, the walk turns left to head away from the trail line towards the grassy clearing. The walk crosses a small creek, then finds the rusty steam engine and a few other scattered historic items. At the end of this side trip, retrace your steps back to the main walk then Turn right.

### 2.53 | Steam Engine

On the northern side of the Thredbo River at Bullocks Flat is a large, open area, still home to some historic items. Here you will find a rusty portable steam engine, chains, wheels and a small dam. These items are left over from the late 1910's when Ned Irwin established and operated a sawmill here. He would process the Alpine Ash trees that had been cut from the surrounding hills. There was another mill operating at the nearby Sawpit Creek since the mid to late 1800's. During the 1850's some gold mining was also undertaken at this site, but it proved not a very popular site. .

### 2.53 | SE corner of Skitube bridge

(100 m 1 mins) Continue straight: From the intersection, this walk follows the 'Bullocks Hut' sign, keeping the river to your left and passing over a metal grate. The track almost immediately comes to another three-way intersection with a timber post and opening in the fence (on your right). Veer right: From the intersection, this walk heads directly away from the river, through the gap in the fence to the large grassy clearing. The walk heads left through the clearing (passing the toilet, on your right) to come to a series of buildings, the last of which is Bullocks Hut.

### 2.63 | Bullocks Hut

Bullocks Hut is a cement block house, built in 1934 as a fishing lodge for Dr Bullock. Extra buildings were added to the substantial house over the following decades. The hut has been managed by NPWS since 1969, and was fully renovated when the nearby Skitube was built in the early 90s. Bullocks Hut has bunk beds, tiled floors, a stainless steel food preparation area with sink, as well as a nearby toilet and stables building. A popular spot for day visits. The hut and grounds are available for hire for events such as wedding, please respect the space of other people using this site. [More info.](#)

### 2.63 | Bullocks Hut

(410 m 7 mins) Continue straight: From the front of the main hut, this walk follows the short, concrete path towards the confluence of Little Thredbo and Thredbo Rivers. Near the rivers, the track turns sharply left to follow the Thredbo River upstream, just on the other side of the fence from the Bullocks Hut. This track soon leads to a signposted three-way intersection at the other end of the Bullocks Hut yard (with a gap in the fence to your left).

Continue straight: From the intersection, this walk follows the 'Skitube' sign along the track, keeping the river to your right. The track leads over a metal grate and almost immediately comes to a signposted three-way intersection, just before the bridge.

Continue straight: From the intersection, this walk follows the 'Skitube Carpark' sign under the bridge, whilst keeping the river to your right. The walk follows the paved footpath uphill, passing a 'Bullocks Hut' sign (facing the other way) and continuing straight along the wide gravel path. This path soon narrows and bends left (at the water monitoring station) and leads over the grass and across a timber bridge. On the other side of the bridge, this walk comes to a three-way intersection where there is a 'Bullocks Hut 300m' sign pointing back over the bridge.

### 3.04 | Bullocks Loop bridge intersection

(1.4 km 28 mins) Veer right: From the intersection, this walk follows the 'Thredbo Diggings 1.8km' sign along the grassy track, initially keeping the creek to your right. The track soon bends left and leads through the snow gum forest and past a scattering of granite boulders, enjoying the occasional view down to the Thredbo River. About 700m from the bridge, the track leads down some steps and across a narrow gully before climbing back up the other side. The trail winds over the rise, winding through more small granite boulders and leading down closer to the river. Soon after crossing a metal grate, the track comes close beside the river and to a series of boulders, a great spot to rest and enjoy the river.

### 4.4 | Thredbo River rocks

(480 m 9 mins) Turn left: From the river bank, this walk follows the clear track west, upstream, initially heading directly away from the river. The track winds through the forest for a while, passing a couple of informal tracks (which lead to riverside areas) and soon heads down just a few steps to come to a lovely grassy clearing on the bank of the river. From here, the track heads up the few steps and continues along the track for about 90m, to a smaller clearing just before Bull Creek bridge.

### 4.88 | Bull Creek bridge

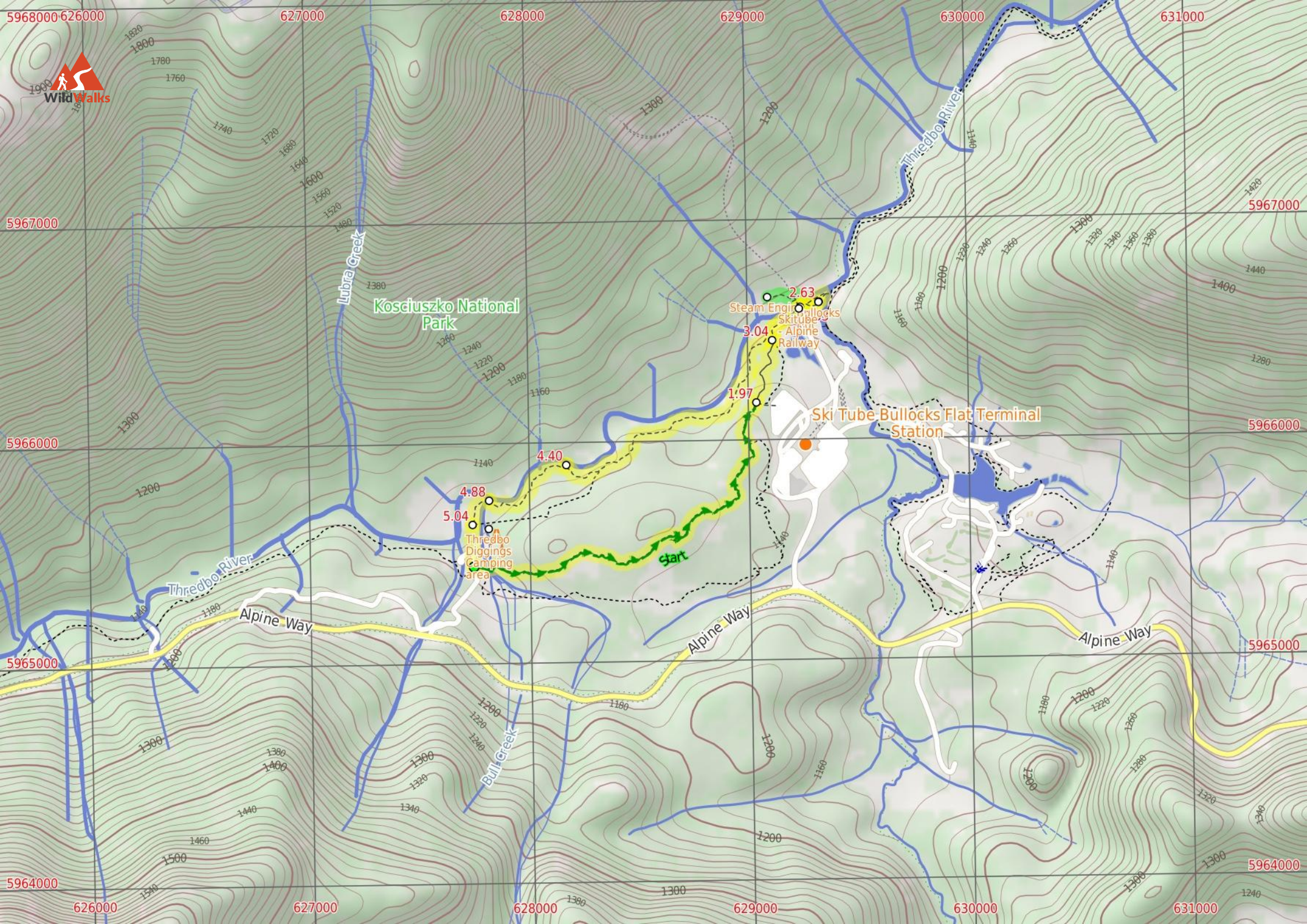
(160 m 3 mins) Turn left: From the small clearing, this walk crosses the Bull Creek bridge and follows the track as it bends left to leave the Thredbo River and heads up through the button grass plain. The track soon leads to an intersection at the bottom of a turning circle (at the northern end of Thredbo Diggings), marked with a 'Bullocks Track' sign pointing back along the track.

### 5.04 | Lower Thredbo Diggings

(190 m 4 mins) Continue straight: From the intersection, this walk heads uphill along the dirt road leading through the campsites. The road soon leads past a toilet (on your left) then straight past an intersection (with a dirt road

and sign on your right). About 80m further up the road, this walk comes to a small car park and the signposted 'Bullocks Track', on your left. This is just south of Thredbo Diggings, about 430m from the Alpine Way.





5968000 626000

627000

628000

629000

630000

631000

5967000

5967000

5966000

5966000

5965000

5965000

5964000

5964000

626000

627000

628000

629000

630000

631000

## Summary navigation sheet for the Bullock's track - via Bullock's Hut



km	From	Up/Dwn	Length	Initial directions (Use full tracknotes and maps for more detail)
0.00	Thredbo Diggings Bullocks trackhead -36.4478,148.4254 (GR Perisher Valley, 277654)	31 -30	2 km 34 mins	From the Bullocks Trackhead (just south of Thredbo Diggings, about 430m from the Alpine Way), this walk follows the metal 'Bullocks Track' sign down the steps (or ramp) and along the gravel path to cross an open gra...
1.97	Int of Bullocks Walking and car park tracks -36.441,148.4397 (GR Perisher Valley, 290662)	0 -15	340 m 6 mins	Continue straight: From the intersection, this walk follows the 'Bullocks Hut 600m' sign gently downhill along the gravel path.
2.31	Bullocks Loop bridge intersection -36.4385,148.4405 (GR Perisher Valley, 291665)	1 -5	220 m 4 mins	Turn right: From the intersection, this walk follows the 'Bullocks Hut 300m' sign across the bridge.
2.53	SE corner of Skitube bridge -36.4371,148.4419 (GR Perisher Valley, 292666)	7 -3	310 m 6 mins	Optional sidetrip to Steam Engine. Turn right: From the intersection, this walk heads uphill, away from the river and face of the 'River Walk' sign, keeping the rail bridge to your right.
2.53	SE corner of Skitube bridge -36.4371,148.4419 (GR Perisher Valley, 292666)	0 0	100 m 1 mins	Continue straight: From the intersection, this walk follows the 'Bullocks Hut' sign, keeping the river to your left and passing over a metal grate.
2.63	Bullocks Hut -36.4369,148.4429 (GR Perisher Valley, 293666)	6 -1	410 m 7 mins	Continue straight: From the front of the main hut, this walk follows the short, concrete path towards the confluence of Little Thredbo and Thredbo Rivers.
3.04	Bullocks Loop bridge intersection -36.4385,148.4405 (GR Perisher Valley, 291665)	53 -50	1.4 km 28 mins	Veer right: From the intersection, this walk follows the 'Thredbo Diggings 1.8km' sign along the grassy track, initially keeping the creek to your right.
4.40	Thredbo River rocks -36.4436,148.4301 (GR Perisher Valley, 282659)	9 -7	480 m 9 mins	Turn left: From the river bank, this walk follows the clear track west, upstream, initially heading directly away from the river.
4.88	Bull Creek bridge -36.4451,148.4262 (GR Perisher Valley, 278657)	2 0	160 m 3 mins	Turn left: From the small clearing, this walk crosses the the Bull Creek bridge and follows the track as it bends left to leave the Thredbo River and heads up through the button grass plain.
5.04	Lower Thredbo Diggings -36.4461,148.4253 (GR Perisher Valley, 277656)	8 0	190 m 4 mins	Continue straight: From the intersection, this walk heads uphill along the dirt road leading through the campsites.